

TIGER



TIMES

Mrs. Kathy Pasquariello - Principal

Mrs. Heather Folmar - Asst. Principal

CALENDAR

September 2016

2 - Boosterthon Kick-off Pep Rally
 5 - No School
 7 - PTA Board Meeting 8am
 7 - Academic Focus Night (see below)
 8 - Academic Focus Night (see below)
 9 - "Independence Day" Student walk to class independently
 15 - Boosterthon Fun Run
 15 - Early Release Day 11:30am
 19 - School Advisory Council Meeting 2:30p
 27 - Fall Pictures (School Uniform)
 29 - Supper Club - Hurricane Grill/ Ashdan's

Academic Focus Night

September 7, 2016

6:00 - 6:45 pm Grades KG and 2nd
 7:00 - 7:45 pm Grade 4th

September 8, 2016

6:00 - 6:45 pm Grades 1st and 5th
 7:00 - 7:45 pm Grade 3rd

PTA has a NEW WEBSITE!

If you are looking for forms, flyers, general information and more, check us out at www.timbertracepta.weebly.com!

Thank you Business Partners!

Vargas Orthodontics
 Mathnasium of Palm Beach Gdns/ Jupiter
 Maaco Collision Repair & Auto Painting
 American Top Team Palm Beach Gardens
 Meier Orthodontics

If you would like more information on becoming a TTES Business Partner please contact Juan Uribe at: Juan.Uribe@fpl.com

Dear TTES Families,

We are excited to invite all of our families to one of the most important events of the year, our Academic Focus Evening. This evening will set the course for the success of our students for the year. Parents will learn about their child's schedules, instructional approaches and the standards and goals set for students at their grade level. Teachers will also share homework procedures, classroom routines and how best to communicate regularly with the teacher. We look forward to seeing all of our families at this event.

We also encourage all of our families to read through the information included regarding the upcoming referendum which will be on the ballot for families to vote on in November. If the penny sales tax is passed, it will support Timber Trace directly in a wide range of areas. School facilities will be upgraded throughout the building as well as technology will be added to support our students in daily instruction. We encourage families to read through the information and see the direct impact it will make on our schools!

September is also the month of our Boosterthon event! Our students and staff look forward to this great event every year. We encourage families to support our school by gathering sponsors from friends and families. We hope you can join us for this fun event and we look forward to walking with our kids on September 15th!

*Yours in education,
 Mrs. Pasquariello*

Independence Day

Independence Day will be held on Friday, Sept. 9th and students will be allowed to wear RED, WHITE and BLUE. At 1:00 pm EST we will join in the "National Anthem Sing-A-Long." The Star Spangled Banner will be played on our News Channel. This is a simple - yet powerful event to honor Sept. 11; Celebrate the birthday of the National Anthem on Sept. 14th and unite our country through pride and patriotism.

Academic Focus Night- Come Learn all about your child's classroom!

Academic Focus night is a time for teachers to share what your child will be learning this school year. Teachers will discuss schedules, learning goals and targets, classroom and homework procedures and how to help your child be successful for the school year. September 7th 6pm-6:45pm - Grades KG and 2nd, 7pm - 7:45pm - Grade 4th. September 8th 6pm-6:45pm - Grades 1st and 5th, 7pm-7:45pm - Grade 3rd

Timber Trace Business Partners - A Great way to Support TTES!

Dear Parents and Community Members:

Forming a business partnership is a phenomenal opportunity for businesses to support your local schools. By becoming a business partner with Timber Trace Elementary, and making a tax-deductible donation, you will receive favorable exposure with over 850 local families and the community. Your entire donation will go towards the school to help purchase items including computer software, books, materials, supplies and much more.

Business partners will receive recognition in the school newsletter, a fence banner, on our business partner webpage and PTA social media feeds, and most importantly, partnering to support the schools and our future generations! In addition, you will be able to distribute flyers throughout the year to our families and receive an invitation to our Annual Fun Fair in April to promote your business.

Please contact Juan Uribe at Juan.Uribe@fpl.com for more info.

Timber Trace PTA on Facebook and the Web!

Please "like" our Facebook page "Timber Trace PTA" and follow us for: Events, Meetings, Supper Clubs, Fun Facts, School updates, and much, much more!

Tigers, PTA has officially launched its own website. If you are looking for forms, flyers, general information and more, check us out at www.timbertracepta.weebly.com!

Menchie's Friday!

Please join us on Friday, September 9th for our first Menchie's fundraiser of the year. Bring your special student and celebrate the beginning of the school year with a delicious frozen treat. 20% of the proceeds will be given back to Timber Trace! Let's make it an awesome Menchie's Friday - we hope to see you there!

Thank you Volunteers!

Thank you to all the parents that attended PTA's Volunteer Breakfast & Orientation. If you haven't had a chance to fill out your pink Volunteer Interest form, it's not too late to turn it in. Help make a difference in your child's school by volunteering. All PTA forms can be found on the PTA's website under the forms tab at www.timbertracepta.weebly.com. Also, if you plan to be on campus regularly or just want to show your support, PTA is selling adult spirit shirts (orange or light blue) for \$5 each. Please contact PTA to see if your size is in stock as this is a discontinued shirt and availability is limited.

Supper Club - Hurricane Grill & Wings

Tigers, mark your calendar for Thursday, September 29th for our first Supper Club event of the year. Enjoy dinner at Hurricane Grill & Wings and stroll over to Ashdan's Yogurt Café for dessert - both are located in the LA Fitness Plaza. 20% of the proceeds of dine in, take out and all beverages will go back to Timber Trace! Hope to see you there from 4-8pm!

Positive Behavior Support Corner

As part of your school routine, remind your child of how our Universal Guidelines can also be implemented at home. They can be RESPONSIBLE in making sure they complete their homework; RESPECTFUL in that they are in bed at their bedtime without making a fuss; and SAFE as they exit the car.

Boosterthon!

Parents! This year's main fundraiser is the Timber Trace Fun Run. It's a 9-day program that kicks off with a Pep Rally on September 2nd. Then families will have time to get pledges for every lap your student runs (30-35 laps), and we'll celebrate at the Fun Run on September 15th. With our big goal to raise funds for technology and classroom supplies, we asked the Fun Run experts at Boosterthon to power our Fun Run and make it more profitable, easier, and fun.

Students will also experience an amazing character theme, BACKYARD BOX OFFICE! It's a movie theme all about making a difference by getting into character. Our students will learn from five REAL kid difference-makers. From inventors, to world-class speakers, to business owners, to world-record holders, these five kids will inspire our students to practice the five "Character Acts" and make a difference in our community.

Donations will go toward technology and classroom supplies and to the entire 9-day experience. So please help our school by reaching out to sponsors. Also, all families are invited to come out and cheer on your student at the Fun Run! Thank you for your support!

September 15th TTES Fun Run Times:

Kindergarten & 1st grade: 8:15am

2nd & 3rd grades: 9:15am

4th & 5th grades: 10:15am

Internet News

BrainPop and BrainPop Junior Password Change (www.brainpop.com & www.brainpopjr.com)
BrainPop username = palmbeach
BrainPop password = schools

International Dot Day - September 15

International Dot Day will be observed on Sept. 15th and is a global celebration of creativity, courage and collaboration based on the book by Peter H. Reynolds entitled, The Dot. We will participate in a live stream on Discovery Education on Sept. 13th at 1:00 in the afternoon. Many classroom teachers have planned their own events. Our media center will partner with Seminole Trails Elem. in hopes of making this a more comprehensive experience. Timber Trace wants to know, "How will YOU make your mark?"

Media News

October 4-6th our Media Center will host the distance learning program put on by Water Ventures and Crystal Springs Live for 3-5th graders via Skype. Our 3rd graders will focus on the American alligator and its various adaptations. Our 4th and 5th graders will focus on Springs Around the World and learn all about aquifers, the water cycle and watersheds.

i-Ready Information

Our school is implementing a program called *i-Ready* that will provide our students with an innovative diagnostic assessment and engaging instruction. The focus of this online program is reading and math. *i-Ready Diagnostic & Instruction* helps teachers to effectively assess their students and then provide individualized instruction based on each student's unique needs.

i-Ready instruction is designed to complement what is being taught in the classroom. Lessons are assigned based on how your child performed on the diagnostic and are presented in three parts: tutorial, guided practice, and independent practice. This instruction teaches students in the following skill areas, as well as provides real-time, supportive feedback on their progress:

Reading

- Phonological Awareness
- Phonics
- High-Frequency Words
- Vocabulary
- Comprehension

Math

- Number and Operations
- Algebra and Algebraic Thinking
- Measurement and Data
- Geometry



The online instruction is designed to be both challenging and engaging. *i-Ready* delivers instruction using engaging, contemporary animation; the lessons are also interactive. The result is an experience that attracts and holds your child's interest while also teaching important skills and concepts. These lessons are proven to help students grow academically. As students complete each assignment successfully, they earn credits that can be used to play games.

In addition, *i-Ready Instruction* provides a series of comprehensive reports designed to make classroom instruction more effective. These reports include data about student performance on these individualized lessons so that teachers can make informed decisions about the instruction that is right for your child. Homeroom teachers will inform students when home use of *i-Ready* is beneficial.

i-Ready has two free apps available from i-Tunes. One is *Door 24 Plus* for grades 1-5. *Door 24 Plus* focuses on fact fluency and computational fluency. The other free app is *World's Worst Pet* which focuses on vocabulary development for fourth and fifth grade students.

Parents are encouraged to help their child(ren) memorize the student portal username and password. Students use the portal at mysdpbc.org to access district-approved learning resources.

Student Portal Username = s (followed by student ID number, without "pb")

Student Portal Username Example = s12345678

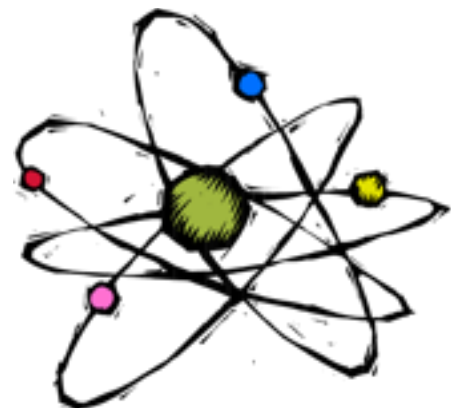
Student Portal Password = last 4 digits of student ID number, followed by capitalized initials, followed by last 2 digits of birth year

Student Portal Password Example for Harry Potter born in 1980 = 5678HP80

Science Fair Update

In order to better align our curriculum and instruction with the Science Sunshine State Standards pacing, we have moved our in-house Science Fair to the earlier part of the year. Grades Kindergarten, 1st and 2nd will be held Nov. 2-3 with open visitation on Wednesday the 2nd from 4:00-6:00pm in the music room. Grades 3, 4, 5 will be held Nov. 16-17 with open visitation on Wednesday the 16th from 4:00-6:00pm in the music room and café. The District Fair remains in May. More info later on in the year.

To assist students with the process each teacher will be conducting a classroom experiment and model putting together a project board in their classrooms. Parent/Student information guides will go home the first week in September along with calendars of due dates and other helpful handouts. Please read carefully as many rules have changed. We will be posting a PowerPoint and video on our Edline page and all resources will also be available in Mrs. Alvarez' Edline page. For questions please ask your child's classroom teacher. If they are unable to answer the question they fill forward it on to me. Project boards will be available for \$5 in the Media Center. Looking forward to an awesome fair! Good luck to all!



WHY

a sales tax?



Why does the District need a sales tax?

The District estimates it needs more than \$1.4 billion in projects related to deferred building maintenance, IT improvements, security upgrades and replacing school bus and "white fleet" vehicles. Of that, more than \$1.1 billion is earmarked to correct years of deferred maintenance on schools and provide security improvements.

Approximately \$133.8 million will be used for much-needed classroom technology upgrades, and nearly \$103 million will be allocated for new school buses, maintenance and police vehicles.

Can't the District pay for these improvements on its own?

The District has two budgets – an operating budget for employee salaries, supplies and other operational needs, and a capital budget that pays for building construction, repairs and maintenance, as well as major purchases such as technology and vehicles such as school buses. The District's current capital budget is not sufficient to cover these projects. Due to budget cuts enacted by the Legislature in 2008, capital budgets for all school districts have been drastically reduced. Capital revenues for the School District of Palm Beach County have been reduced by \$865 million since 2008

How much of the sales tax will go to the District?

If voters approved the increase, the District will receive 50% of the sales tax revenue. The County Government will receive 30% of the revenue and the Cities will share 20% of the revenue.

How long will the District receive this money, if voters approve it?

There is a set expiration date on the proposed sales tax, if it is approved by voters. The sales surtax is designed to expire on December 31, 2026, or when the total proceeds collected equal or exceed \$2.7 billion on or before September 1 of any year, during the duration of the ordinance.

Who will ensure the money is spent properly?

An independent committee will review all School District of Palm Beach County projects and budgets to protect taxpayers' investment. A similar oversight committee was established in 2004, during a previous sales tax collected by the District.

That committee, which included 9 members representing key sectors of Palm Beach County, ensured projects were delivered on time and within budget.

Which projects will receive sales the tax money?

All district schools will benefit from repairs and technology upgrades. A complete list of major projects can be found at

onecountyonepenny.org

During its review, District assessors determined that:

- 101 buildings (51%) are in good condition
- 9 buildings (5%) are in unsatisfactory condition
- 55 buildings (28%) are in fair condition
- 31 buildings (16%) are in poor condition

Even schools that are considered in "good" or "fair" condition require such things as new heating, ventilation and air conditioning (HVAC) systems, roofs, lighting and technology improvements.



PALM BEACH COUNTY SCHOOLS
Your *BEST* Choice!